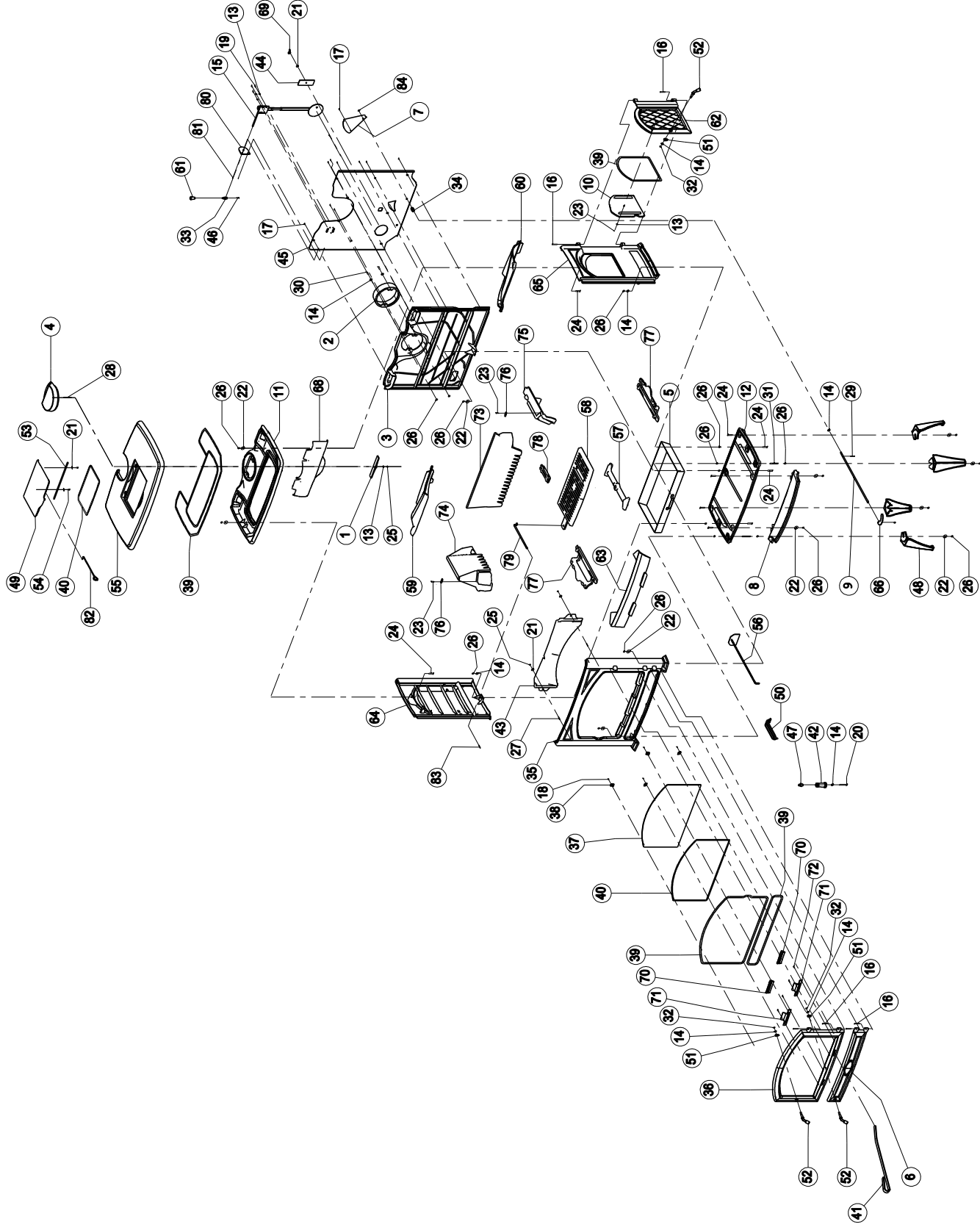




09.93704.000 | 25/08/04

760 GM



1	70.07216.000	317G/02 SLUITPLAATJE VOOR DEKSEL 152 300-17G	317G/02 PLAQUETTE FERMETURE POUR COUVERCLE 300-17G	317G/02 LOCKING PLATE FOR COVER 300-17G	317G/02 VERSCHUSS PLATTE FÜR DECKEL 300-17G
2	70.00301.020	308A AANSLUITKRAAG Ø153 INW. 300-8A	308A BUSELOT Ø153 INW. 300-8A	308A FLUE COLLAR 153 INW. 300-8A	308A ANSCHLUSS STÜTZE Ø153 INW. 300-8A
3	03.02437.205	ACHTERWAND 760CB	PLAQUE ARRIERE 760CB	BACK PLATE 760CB	RÜCKWAND 760CB
4	70.03146.020	AFDEKPLAAT 760/640 CB-GM 03146.0	PLAQUE DE COUVERTE 760/640 CB-GM 03146.0	COVER PLATE 760/640 CB-GM 03146.0	ABDEK PLATTE 760/640 CB-GM 03146.0
5	70.05224.000	05224.0 ASLADE 760 CB	05224.0 BAC A CENDRES 760 CB	05224.0 ASH BOX 760 CB	05224.0 ASCHENKASTEN 760 CB
6	70.15871.020	ASLADEDEUR 760 CB	PORTE DE CENDRIER 760 CB	ASH BOX DOOR 760 CB	ASCHE TÜR 760 CB
7	03.37977.000	LUCHTSCHUIF 760CB	REGLETTE D'AIR	DRAFT CONTROL 760CB	LUFTREGLER 760CB
8	03.05618.105	ASVANG 760CB	BAVETTE 760CB	ASH LIP 760CB	ASCHENPLATTE 760CB
9	03.65441.300	BEDIENINGSSTANG LUCHTSCHUIF 760CB	REGLETTE D'AIR	HANDLE AIRCONTROL 760CB	BEDIENUNGSGESTÄNGE LUFTREGLER 760CB
10	70.08210.000	08210.1 BINNENDEUR 760CB	08210.1 PORTE INTERIEUR 760CB	08210.1 INNER DOOR 760CB	08210.1 INNEN TÜR 760CB
11	03.08350.202	BINNENTOPPLAAT 760CB/GM	PLAQUE INTERIEURE 760CB/GM	INNER TOPPLATE 760CB/GM	INNENPLATTE OBEN 760CB/GM
12	03.09386.100	BODEMPLAAT 760CB/GM	BASE 760CB	BOTTOM PLATE 760CB	BODENPLATTE 760CB/GM
13	70.16501.000	10 ST D125 Ø6XØ12 SLUITRING	10 P RONDELLE D125 Ø6XØ12	10 PC WASHER D125 Ø6XØ12	10 ST D125 Ø6XØ12 UNTERLEGSCHEIBE
14	70.16502.000	10 ST D125 Ø8XØ17 SLUITRING - 16502.0	10 PC RONDELLE Ø8XØ17 - 16502.0	10 PC WASHER D125 Ø8XØ17 - 16502.0	10 ST D125 Ø8XØ17 UNTERLEGSCHEIBE - 16502.0
15	70.68228.000	THERMOSTAAT 640GM/760GM/TAI	THERMOSTAT 640GM/760GM/TAI	THERMOSTAT 640GM/760GM/TAI	THERMOSTAT 640GM/760GM/TAI
16	70.17516.000	10 ST Ø5.9x35 RVS BOLKOPKLINKNAGEL - 17505.0	10 P RIVET Ø6X35 - 17505.0	10 PC RIVET Ø6X35 - 17505.0	10 ST RIVER Ø6X35 - 17505.0
17	70.18002.000	10 st D7516A M6X12 BOLCIL.KK.SNIJSCHR	10 p SCREW DIN 7516A M6x12	10 pc SCREW DIN 7516A M6x12	10 st SCHRAUBE DIN 7516A M6x12
18	03.18101.041	D7516D M5 *NT GEBRUIKEN* NU 03.19801.041	VIS DIN 7516D M5x10	SCREW DIN 7516D M5x10	SCHRAUBE DIN 7516D M5x10
19	70.18413.000	10 st SCHROEF DIN 7981B 4,2x16	10 p D7981B 4.8X16 CIL.KK.PL.SCHR *	10 pc SCREW DIN 7981B 4.8X16	10 st SCHRAUBE DIN 4.8X16
20	70.20307.000	10 st SCHROEF M8X50	10 p VIS M8X50	10 pc SCREW M8X50	10 st SCHRAUBE M8X50
21	70.18701.000	10 st D9021A Ø6XØ18 SLUITRING	10 P RONDELLE DIN 9021A Ø6	10 PC WASHER DIN 9021A Ø6XØ18	10 st UNTERLEGSCHEIBE DIN 9021A Ø6XØ18
22	70.18710.000	10 st SLUITRING 8X25	10 p Ø8xØ25 RONDELLE	10 pc WASHER 8X25	10 st VERSCHUSS 8X25
23	70.19303.000	10 st D933 M6X12 GEZWART ZESKANTTAPABOUT	10 p BOULON DIN 933 M6x12	10 pc BOLT DIN 933 M6x12	10 st BOLZEN DIN 933 M6x12
24	70.19314.000	10 st ZESKANT TAPABOUT M8X30	10 p BOULON DIN 933 M8x30	10 pc BOLT DIN 933 M8x30	10 st BOLZEN DIN 933 M8x30
25	70.19410.000	10 st D934 M6 ZESKANTMOEREN	10 p ECROU DIN 934 M6	10 pc NUT DIN 934 M6	10 st MUTTER DIN 934 M6
26	70.19401.000	10 ST D934 M8 ZESKANTMOER 19401.0	10 P ECROU DIN 934 M8 19401.0	10 PC NUT DIN 934 M8 19401.0	10 ST MUTTER DIN 934 M8 19401.0
27	70.19502.000	10 st D939 M6X20 TAPEINDEN	10 p GOUJON DIN 939 M6x20	10 pc STUD DIN 939 M6x20	10 st STIFTSCHRAUBE DIN 939 M6x20
28	70.19515.000	10 st D939 M6X45 TAPEIND	10 p GOUJON DIN 939 M6X45	10 pc STUD DIN 939 M6X45	10 st STUD DIN 939 M6X45
29	70.19610.000	10 st SPLITPEN 2,5X25	10 p CLAVETTE DIN 94 Ø2.5x25	10 pc SPLITPIN DIN 94 Ø2.5x25	10 st SPLINTE DIN 94 Ø2.5x25
30	70.19701.000	10 st SCHROEF M8X25	10 p VIS M8X25	10 pc SCREW M8X25	10 st SCHRAUBE M8X25
31	03.21722.000	D916 M8X60 STELSCH.BI.ZESK *	VIS DIN 916 M8X60	SCREW DIN 916 M8X60	GEWINDESTIFT DIN 916 M8X60
32	70.20010.000	10 ST D980 M8 ZELFB.MOER CLEVELOCK 20010.0	10 P ECROU DE VERROUILLAGE DIN 980 M8 20010.0	10 PC LOCKING NUT DIN 980 M8 20010.0	10 ST SICHERUNGSMUTTER DIN 980 M8 20010.0
33	03.74506.041	VERBINDINGSSTUK KNOP	PIECE DE CONNECTION BOUTON	BINDPIECE BUTTON	VERBINDUNGSSTÜCK KNOPF
34	03.72606.000	DRUKVEER 67LV1	RESSORT	SPRING	FEDER
35	03.24412.200	WM FRONT 760CB	FACADE 760CB	FRONT 760CB	WM FRONT 760CB
36	70.15870.020	15870.0 FRONTDEUR 760CB	15870.0 PORT FACADE 760CB	15870.0 FRONT DOOR 760CB	15870.0 FRONT TÜR 760CB
37	70.26309.000	GLAS 760CB 515X319X4R 26309.0	VITRE 760CB 515X319X4R 26309.0	GLASS 760CB 515X319X4R 26309.0	GLAS 700/750 495X252X4R 26309.0
38	70.26101.041	4ST SET GLASBEV; 20X20MM	4PC SET FIXATION VITRE 20X20	4PC SET GLASS RETAINER 20X20	4ST SET GLAS BEHÄLTER 20X20
39	70.79869.000	SERVICE KIT 6.5M GLASVEZELKOORD 8MM - SK	SERVICE KIT 6.5M JOINT FIBRE CERAMIQUE 8MM - SK	SERVICE KIT 6.5M GLASS FIBER ROPE 8 MM - SK	SERVICE KIT 6.5M GLASFABER SCHNUR 8MM - SK
40	70.79870.000	SERVICE KIT 4.0M GLASVEZELKOORD 6MM - TU.SK6	SERVICE KIT 4.0M JOINT FIBRE CERAMIQUE 6MM - SK6	SERVICE KIT 4.0M GLASS FIBER ROPE 6MM -TU.SK6	SERVICE KIT 4.0M GLASFABER SCHNUR 6MM - TU.SK6
41	70.52103.071	kolenpook gedompeld	tisonnier charbon	poker coal	kohlenhaken getaucht
42	70.27507.000	27507.0 set houten handvat	27507.0 set poignee bois	27507.0 complete handle wood	27507.0 komplett griff holz
43	70.37353.000	37353.0 LUCHTGELEIDER 760CB	37353.0 CONDUIT D'AIR 760CB	37353.0 AIRDUCT 760CB	37353.0 LUFTLEITUNG 760CB
44	03.37977.000	LUCHTSCHUIF 760CB	REGLETTE D'AIR	DRAFT CONTROL 760CB	LUFTREGLER 760CB
45	03.37635.100	WM LUCHTTUNNELPLAAT 760CB	WM LUCHTTUNNELPLAAT 760CB	WM LUCHTTUNNELPLAAT 760CB	WM LUCHTTUNNELPLAAT 760CB
46	70.21701.000	10 st D916 M6X6 STELSCHR.BI.ZESK - 21701.0	10 p VIS DIN 916 M6X6 - 21701.0	10 pc SCREW DIN 916 M6X6 - 21701.0	10 st GEWINDESTIFTE DIN 916 M6X6 - 21701.0

47	03.46527.041	OPVULSTUK GEZWART 450/750 *Z	CONNECTION Pièce	CONNECTOR PIECE	TEIL FUER TUERGRIF
48	70.52244.020	52244.0 POOT 760CB	52244.0 PIED 760CB	52244.0 LEG 760CB	52244.0 FUSS 760CB
49	70.15343.020	VULDEKSEL 760 GM	COUVERCLE 760 GM	HOPPER LID 760 GM	FÜLDECKEL 760 GM
50	70.27226.020	SLT5-/01 KOUDE HAND ASBAK	SLT5-/01 MAIN FROIDE BAC A CENDRES3	SLT5-/01 COLD HAND ASHPAN	SLT5-/01 KALTE HAND ASCHENKASTE
51	70.64220.000	SLUITLIP DEUR	PLAQUETTE FERMETURE	LOCKING LIP	VERSCHUSS LIPE
52	70.64221.041	SLUITSTUK 450/500/750 ZWART 64221.0	PIECE DE FERMETURE 450/500/750/NOIRE 64221.0	CLOSING BREECH 450/500/750 ZWART 64221.0	VERSCHLUSS STÜCK 450/500/750 SCHWARZ 64221.0
53	70.65439.000	SCHARNIERSTANG 760GM	TIGE 760GM	HINGE PIN 760GM	SCHARNIERSTANGE 760GM
54	70.20311.041	10 st D7985 M6X12 GEZW BOLCIL KK SCH	10 p VIS DIN 7985 M6X12	10 pc SCREW DIN 7985 M6X12	10 st SCHRAUBE DIN 7985 M6X12
55	70.69179.020	TOPPLAAT 760GM	PLAQUE SUPERIEURE 760GM	TOP PLATE 760GM	TOP PLATTE 760GM
56	70.59209.000	TREKSCHEPJE 600	RACLOIR 600	SCRAPER 600	SCHÜREISEN 600
57	70.56322.000	ROOSTERHOUDER 760GM	SUPPORT DE GRILL 760GM	GRATE SUPPORT 760GM	ROST BEHÄLTER 760GM
58	70.61113.000	SCHUDROOSTER 760 GM	GRILLE DE DECENDRAGE 760 GM	RIDDLING GRATE 760 GM	RÜTTELROST 760 GM
59	70.76153.000	76153.0 VLAMPLAAT LINKS 760 CB	76153.0 DEFLECTEUR GAUCHE 760 CB	76153.0 BAFFLE PLATE LEFT 760 CB	76153.0 FLAMLEITPLATTE LINKS 760 CB
60	70.76154.000	76154.0 VLAMPLAAT RECHTS 760 CB	76154.0 DEFLECTEUR DROITE 760CB	76154.0 BAFFLE PLATE RIGHT 760 CB	76154.0 FLAMLEITPLATTE RECHTS 760 CB
61	70.33026.000	KNP181 KNOP LUCHTSCHUIF	BOUTON REGLETTE D'AIR KNP181	KNOB DRAFT CONTROL KNP181	KNOPF LUFT SCHIEBER KNP181
62	70.15869.020	VULDEUR GEMONT. 760GM	PORTE A CHARGER 760GM	LOADING DOOR COMPL. 760GM	FÜLLTÜR MONTEERT 760GM
63	70.77079.020	VUURKORF VOOR 760GM	GARDE-BUCHES POUR 760GM	LOG RETAINER FRONT 760GM	STEHROST FÜR 760GM
64	03.79588.205	ZIJWAND L 760CB	PLAQUE LATERALE GAUCHE 760CB	SIDE PLATE LEFT 760CB	SEITE L 760CB
65	03.79589.105	ZIJWAND R 760CB	PLAQUE LATERALE DROITE 760CB	SIDE PLATE RIGHT 760CB	SEITE R 760CB
66	70.27242.000	HANDGREEP LUCHTSCHUIF	POIGNEE REGLETTE DAIR	HANDLE DRAFT CONTROL	GRIFF LUFT SCHIEBER
67	70.21701.000	10 st D916 M6X6 STELSCHR.BI ZESK - 21701.0	10 p VIS DIN 916 M6X6 - 21701.0	10 pc SCREW DIN 916 M6X6 - 21701.0	10 st GEWINDESTIFTE DIN 916 M6X6 - 21701.0
68	70.77909.000	RECUPERATOR 640/760	RECUPERATEUR 640/760	HEAT EXCHANGER 640/760	WÄRMEAUSTAUSCHER 640/760
69	03.21206.000	D315 M6 VLEUGELMOER *	ECROU A AILETTES DIN 315 M6	WINGED NUT DIN 315 M6	FLUEGELMUTTER DIN 315 M6
70	03.52105.000	POOKKLEP 760GM/78GM	POOKKLEP 760GM/78GM	POOKKLEP 760GM/78GM	POOKKLEP 760GM/78GM
71	03.52104.000	POOKKLEPHOUDER 760GM/78GM	PORTE VALVE DE TISONNIER 760GM/78GM	DAMPER POKER HOLDER 760GM/78GM	HAKENKLAPPEBEHÄLTER 760GM/78GM
72	70.19302.000	10 st ZESKANTTAPBOUT D933 M6X10	10 p BOULON DIN 933 M6x10	10 pc BOLT DIN 933 M6x10	10 st BOLZEN DIN 933 M6x10
73	70.77062.000	VUURKORF ACHTER 760GM	GARDE-BUCHES ARRIERE 760GM	LOG RETAINER BACK 760GM	STEROST HINTEN 760GM
74	70.77063.000	VUURKORF LINKS 760GM	GARDE-BUCHE GAUCHE 760GM	LOG RETAINER LEFT 760GM	STEHROST LINKS 760GM
75	70.77064.000	VUURKORF RECHTS 760GM	GARDE-BUCHES DROITE 760GM	LOG RETAINER RIGHT 760GM	STEHROST RECHTS 760GM
76	03.07222.000	2734 BVP KLEP-AS/VUURKORF	PLAQUETTE DE FIXATION CLAPETTE	ATTACHMENT PLATE DAMPER	BEFESTIGUNGSPLATTE Klappe
77	70.56323.000	ROOSTERHOUDER L+R 760GM	SUPPORT DE GRILLE GAUCHE DROITE 760GM	GRATE SUPPORT LEFT RIGHT 760GM	ROST BEHÄLTER LINKS RECHTS 760GM
79	70.61314.000	SCHUDSTANG 760 GM	TIGE DE DECENDRAGE 760GM	RIDDLING ROD 760GM	RÜTTELSTANGE 760GM
80	03.66096.002	STEUN KNOP 760GM	APPUI POUR BOUTON 760GM	KNOB SUPPORT (numbers)	STÜTZE KNOPF 760GM
81	03.18401.000	D7981B 4,2X13 CIL.K.KOPPSCHR. *	VIS DIN 7981B 4,2x13	SCREW DIN 7981B 4,2x13	SCHRAUBE DIN 7981B 4,2x13
82	70.59202.043	HAAK04 - POK (MAZOUTHAAK)	HAAK04 - TISSONIER MAZOUT	HAAK04 - HANDLE MAZOUT	HAAK04 - POKER (HEIZÖLHAKEN)
83	70.33043.041	33043.0 KNOP SCHUDSTANG 250	33043.0 BOUTON TIGE DE DECENDRAGE 250	33043.0 KNOB SHAKING BAR 250	33043.0 KNOPF RÜTTELSTANGE 250
84	70.64608.000	10 st SNELBORGER A8 STARLOCK Z.KAP	10 p RONDELLE A8 STARLOCK	10 pc WASHER A8 STARLOCK	10 st UNTERLEGSCHIEBE A8 STARLOCK