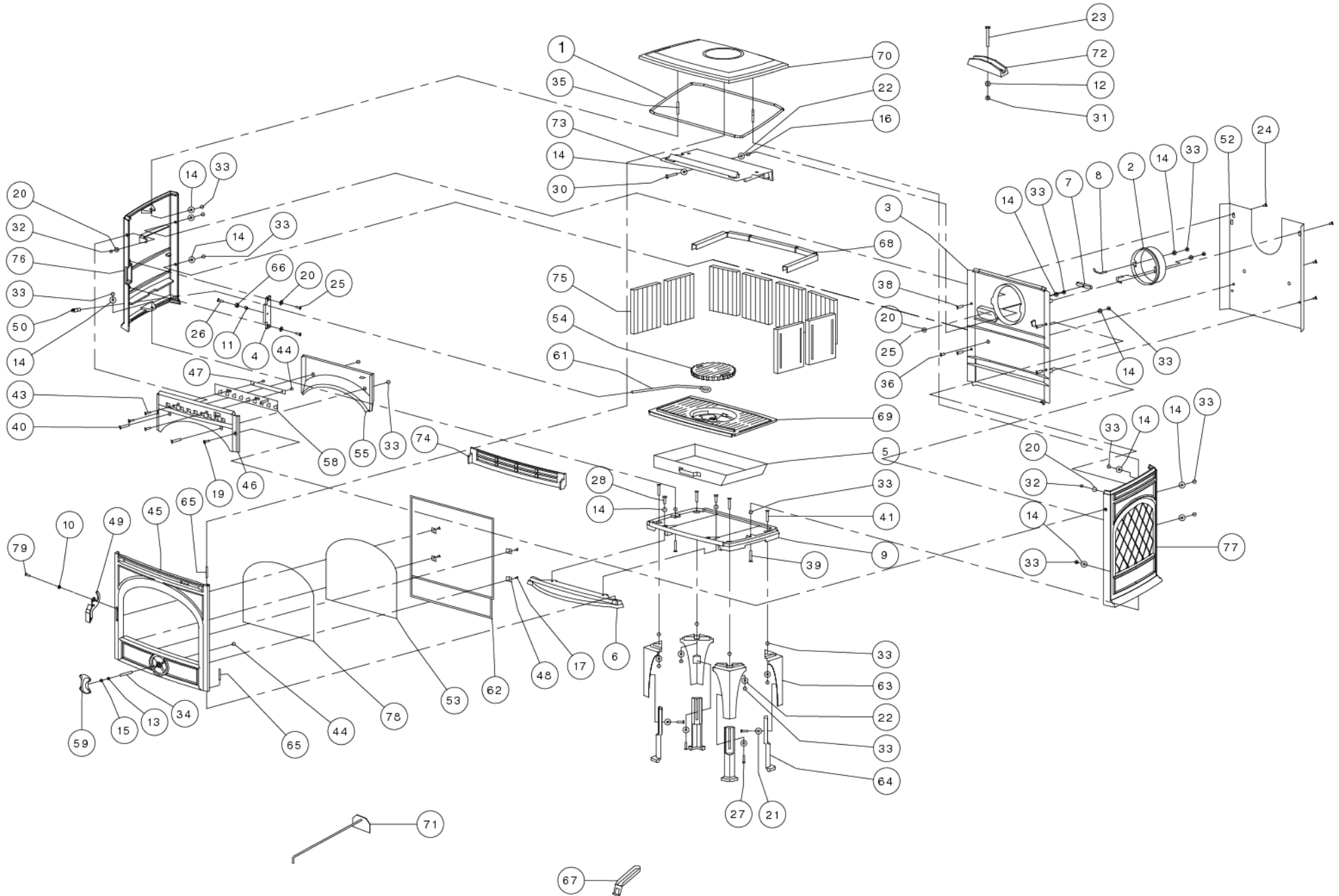




425GM



| | | | | | |
|----|--------------|---|---|---|---|
| 1 | 70.79869.000 | SERVICE KIT 6.5M GLASVEZELKOORD 8MM - SK | SERVICE KIT 6.5M JOINT FIBRE CERAMIQUE 8MM - SK | SERVICE KIT 6.5M GLASS FIBER ROPE 8 MM - SK | SERVICE KIT 6.5M GLASFABER SCHNUR 8MM - SK |
| 2 | 70.00341.020 | 00341.0 AANSLUITKRAAG Ø150 UITW. | 00341.0 BUSELOT Ø150 EXTÉRIEUR | 00341.0 FLUE COLLAR Ø150 OUTSIDE | 00341.0 ANSCHLUSS STÜTZE Ø150 AUßERLICH |
| 3 | 03.02429.020 | ACHTERWAND 550CB ANTRACIET | ACHTERWAND 550CB ANTRACIET | BACK PLATE 550CB | ACHTERWAND 550CB ANTRACIET |
| 4 | 03.03132.020 | AFDEKPLAATJE 425CB/GM ANTRACIET | AFDEKPLAATJE 425CB/GM ANTRACIET | COVER PLATE 425CB/GM | AFDEKPLAATJE 425CB/GM ANTRACIET |
| 5 | 70.05201.000 | 05201.0 ASLADE FOCUS, 900G | 05201.0 bac a cendres focus 900g | 05201.0 ach box focus 900g | 05201.0 achenkasten focus 900g |
| 6 | 03.05616.089 | ASVANG 425CB/GM E10 | ASVANG 425CB/GM E10 | ASVANG 425CB/GM E10 | ASVANG 425CB/GM E10 |
| 7 | 03.03513.020 | AFDICHTPLAATJE RUG 500 KOLEN ANTRACIET | PLAQUE DE FERMETURE 500 CHARBON | SHUT | AFDICHTPLAATJE RUG 500 KOLEN ANTRACIET |
| 8 | 70.07107.000 | 2 st BEVESTEGINGSBEUGEL KRAAG | 2 p 07107.1 PIECE DE CONNECTION BUSE | 2 pc07107.1 CONNECTING PIECE COLLAR | 2 st 07107.1 BEFESTIGUNGSCLIP |
| 9 | 03.09359.005 | BODEMPLAAT 550CB | BODEMPLAAT 550CB | BODEMPLAAT 550CB | BODEMPLAAT 550CB |
| 10 | 70.13641.000 | 10 st BUSJE MET KRAAG Ø12XØ6X5.8 | 10 p TUBE Ø12XØ6X5.8 | 10 pc BUSHING WITH COLLAR Ø12XØ6XØ5.8 | 10 st BUECHSE Ø12XØ6XØ5.8 |
| 11 | 70.13619.000 | 10 st BUSJE SLUITSTUK Ø10XØ6X8.5 | 10 p TUBE PIECE DE FERMETURE Ø10XØ6X8.5 | 10 pc BUSHING LATCH Ø10XØ6X8.5 | 10 st BÜCHSE VERSCHLUSS STÜCK Ø10XØ6X8.5 |
| 12 | 70.16503.000 | 10 st SLUITRING 10X21 | 10 p RONDELLE 10X21 | 10 pc WASHER 10X21 | 10 st VERSCHUSS 10X21 |
| 13 | 70.16501.000 | 10 ST D125 Ø6XØ12 SLUITRING | 10 P RONDELLE D125 Ø6XØ12 | 10 PC WASHER D125 Ø6XØ12 | 10 ST D125 Ø6XØ12 UNTERLEGSCHIEBE |
| 14 | 70.16502.000 | 10 ST D125 Ø8XØ17 SLUITRING - 16502.0 | 10 PC RONDELLE Ø8XØ17 - 16502.0 | 10 PC WASHER D125 Ø8XØ17 - 16502.0 | 10 ST D125 Ø8XØ17 UNTERLEGSCHIEBE - 16502.0 |
| 15 | 70.16601.000 | 10 ST Ø6 VEERRING GEWELFD | 10 p RONDELLE DIN 137B Ø6 | 10 pc SPRING WASHER DIN 137B Ø6 | 10 st FEDERSCHIEBE DIN 137B Ø6 |
| 16 | 70.17102.000 | 10 st D439 M8 LAGE ZESKANTMOER - 17102.0 | 10 p ECROU DIN 439 M8 - 17102.0 | 10 pc NUT DIN 439 M8 - 17102.0 | 10 st MUTTER DIN439 M8 - 17102.0 |
| 17 | 03.18101.041 | D7516D M5 *NT GEBRUIKEN* NU 03.19801.041 | VIS DIN 7516D M5x10 | SCREW DIN 7516D M5x10 | SCHRAUBE DIN 7516D M5x10 |
| 19 | 70.18602.041 | 10 st D7991 M6X20 VERZ.SCHR.BIZK GEZW VOLDR | 10 p VIS DIN 7991 M6x20 NOIR | 10 pc SCREW DIN 7991 M6x20 BLACK | 10 st SCREW DIN 7991 M6x20 BLACK |
| 20 | 70.18701.000 | 10 st D9021A Ø6XØ18 SLUITRING | 10 P RONDELLE DIN 9021A Ø6 | 10 PC WASHER DIN 9021A Ø6XØ18 | 10 st UNTERLEGSCHIEBE DIN 9021A Ø6XØ18 |
| 22 | 70.18710.000 | 10 st SLUITRING 8X25 | 10 p Ø8xØ25 RONDELLE | 10 pc WASHER 8X25 | 10 st VERSCHUSS 8X25 |
| 23 | 70.19328.000 | 10 st ZESKANT TAPBOUT M10X75 | 10 p VIS DIN 933 M10X75 | 10 pc SCREW DIN 933 M10X75 | 10 st SCHRAUBE DIN 933 M10X75 |
| 24 | 70.19302.000 | 10 st ZESKANTTAPBOUT D933 M6X10 | 10 p BOULON DIN 933 M6x10 | 10 pc BOLT DIN 933 M6x10 | 10 st BOLZEN DIN 933 M6x10 |
| 25 | 70.19304.000 | 10 st D933 M6X16 ZESKANTTAPBOUT | 10 p BOULON DIN 933 M6x16 | 10 pc BOLT DIN 933 M6x16 | 10 st BOLZEN DIN 933 M6x16 |
| 26 | 70.19305.000 | 10 st D933 M6X20 ZESKANTTAPBOUT | 10 p BOULON DIN 933 M6x20 | 10 pc BOLT DIN 933 M6x20 | 10 st BOLZEN DIN 933 M6x20 |
| 27 | 70.19306.000 | 10 ST M6X25 ZESKANTTAPBOUT | 10 p BOULON DIN 933 M6x25 | 10 pc BOLT DIN 933 M6x25 | 10 st BOLZEN DIN 933 M6x25 |
| 28 | 70.19311.000 | 10 st D933 M8X16 ZESKANTTAPBOUT | 10 p BOULON DIN 933 M8x16 | 10 pc BOLT DIN 933 M8x16 | 10 st BOLT DIN 933 M8x16 |
| 30 | 70.19316.000 | 10 st ZESKANT TAPBOUT M8X40 | 10 p BOULON DIN 933 M8X40 | 10 pc BOLT DIN 933 M8x40 | 10 st BOLZEN DIN 933 M8x40 |
| 31 | 70.19406.000 | 10 st ZESKANT MOER M10 | 10 p D934 M10 ECROU | 10 pc NUT DIN 934 M10 | 10 st D934 M10 MUTTER |
| 32 | 70.19410.000 | 10 st D934 M6 ZESKANTMOEREN | 10 p ECROU DIN 934 M6 | 10 pc NUT DIN 934 M6 | 10 st MUTTER DIN 934 M6 |
| 33 | 70.19401.000 | 10 ST D934 M8 ZESKANTMOER 19401.0 | 10 P ECROU DIN 934 M8 19401.0 | 10 PC NUT DIN 934 M8 19401.0 | 10 ST MUTTER DIN 934 M8 19401.0 |
| 34 | 70.19502.000 | 10 st D939 M6X20 TAPEINDEN | 10 p GOUJON DIN 939 M6x20 | 10 pc STUD DIN 939 M6x20 | 10 st STIFTSCHRAUBE DIN 939 M6x20 |
| 35 | 70.19511.000 | 10 st D939 M8X50 TAPEIND | 10 p GOUJON DIN 939 M8x50 | 10 pc STUD DIN 939 M8x50 | 10 st STIFTSCHRAUBE DIN 939 M8x50 |
| 36 | 03.19731.000 | D963 M8X16 PLATV.SCHR.ZGS * | VIS DIN 963 M8x16 | SCREW DIN 963 M8x16 | SCHRAUBE DIN 963 M8x16 |
| 38 | 70.19701.000 | 10 st SCHROEF M8X25 | 10 p VIS M8X25 | 10 pc SCREW M8X25 | 10 st SCHRAUBE M8X25 |
| 39 | 70.19734.000 | 10 st D963 M8X35 PLATV.SCHR.ZGS# | 10 p VIS DIN 963 M8x35 | 10 pc SCREW DIN 963 M8x35 | 10 st SCHRAUBE DIN 963 M8x35 |
| 40 | 70.19735.000 | 10 ST D963 M8X40 PLATV.SCHR.ZGS | 10 p VIS M8X40 | 10 pc SCREW M8X40 | 10 st SCHRAUBE DIN 963 M8x20 |
| 41 | 03.19739.000 | D963 M8X45 PLATV.SCHR.ZGS * | VIS DIN 963 M8X45 | SCREW DIN 963 M8X45 | SCHRAUBE DIN 963 M8X45 |
| 43 | 70.20803.000 | 10 st D966 M6X20 BOLVERZ KK SCHROEF | 10 p DIN 966 M6X20 VIS A METAUX | 10 pc DIN 966 M6X20 SREW | 10 st DIN 966 M6X20 SCHRAUBEN |
| 44 | 70.20001.000 | 10 st ZELFB.MOER CLEVELOCK | 10 p M6 ECROU CLEVELOCK | 10 pc LOCKING NUT DIN 980 M6 | 10 st SICHERUNGSMUTTER DIN 980 M6 |
| 45 | 03.15821.389 | DEUR 425CB/BM E10 | DEUR 425CB/BM E10 | DEUR 425CB/BM E10 | DEUR 425CB/BM E10 |
| 46 | 03.24371.020 | FRONT 550CB | FACADE 550CB | FRONT 550CB | FRONT 550CB ANTRACIET |
| 47 | 03.25304.000 | GELEID.STRIP 550CB LUCHTSCHUIF | PIECE DE GUIDAGE | GUIDE PLATE DRAUGHT CONTROL | GELEID.STRIP 550CB LUCHTSCHUIF |
| 48 | 70.26101.041 | 4ST SET GLASBEV; 20X20MM | 4PC SET FIXATION VITRE 20X20 | 4PC SET GLASS RETAINER 20X20 | 4ST SET GLAS BEHÄLTER 20X20 |
| 49 | 72.27017.000 | GRENDEL 250 | POIGNEE 250 | HANDLE 250 | VERRIEGELUNG 250 |
| 50 | 70.33043.043 | KNOP SCHUDSTANG 250 | BOUTON TIGE DE DECENDRAGE 250 | KNOB RIDDLING ROD 250 | KNOPF RÜTTELSTANGE 250 |
| 52 | 03.28010.020 | HITTESCHILD RUG 500 (VERF) | PLAQUE DE PROTECTION DOS 500 | HEATSHIELD | HITTESCHILD RUG 500 (VERF) |

| | | | | | |
|----|--------------|--|--|---|--|
| 53 | 70.26063.000 | 26063.0 GLAS 550CB 410X291X4 R | 26063.0 VITRE CERAMIQUE 550CB | 26063.0 CERAMIC GLASS 550CB | 26063.0 GLAS 550CB |
| 54 | 70.61111.000 | 61111.0 SCHUDROOSTER 250 | 61111.0 GRILLE DE DECENDRAGE 250 | 61111.0 RIDDLING GRATE 250 | 61111.0 RÜTTELROST 250 |
| 58 | 02.37949.143 | LUCHTSCHUIF BOVEN 550CB NIKKEL | LUCHTSCHUIF BOVEN 550CB NIKKEL | AIR CONTROL TOP 550CB | LUCHTSCHUIF BOVEN 550CB NIKKEL |
| 59 | 70.37968.089 | LUCHTSCHUIF ONDER 250/E10 | REGLETTE D'AIR DESSOUS 250/E10 | DRAFT CONTROL UNDER 250/E10 | LUFT SCHIEBER UNTER 250/E10 |
| 61 | 70.61310.000 | 61310.1 SCHUDSTANG 425GM | 61310.1 TIGE DE DECENDRAGE 425GM | 61310.1 RIDDLING ROD 425GM | 61310.1 RÜTTELSTANGE 425GM |
| 62 | 70.79922.000 | Z422 : GLASVEZELKOORD 10 MM KOORD-10 | S422 : JOINT FIBRE CERAMIQUE 10 MM KOORD-10 | B422 : GLASS FIBER ROPE 10 MM KOORD-10 | S422 : GLASFASER SCHNUR 10 MM KOORD-10 |
| 63 | 70.52219.089 | POOT BOVEN 550CB/E10 | PIED HAUT 550CB/E10 | LEG UPPER 550CB/E10 | FUSS OBEN 550CB/E10 |
| 64 | 70.52220.089 | POOT ONDER 550CB/E10 | PIED DESSOUS 550CB/E10 | LEG UNDER 550CB/E10 | FUSS UNTER 550CB/E10 |
| 65 | 70.58610.000 | 10 st SCHARNIERPEN Ø6X45 | 10 pc PIVOT AVEC TETE Ø6X45 | 10 pc CLEVIS PIN Ø6X45 | 10 st GEWINDESTIFT OHNE KOPF |
| 66 | 70.13617.000 | SET SLUITING 750/10 SERIE/20 SERIE | SET FERMETURE | SET LOCKING | SET VERSCHUSS |
| 67 | 70.27226.020 | SLT5-/01 KOUDE HAND ASBAK | SLT5-/01 MAIN FROIDE BAC A CENDRES3 | SLT5-/01 COLD HAND ASHPAN | SLT5-/01 KALTE HAND ASCHENKASTE |
| 68 | 70.28866.000 | LAMELHOUDER 425GM | SUPPORT PLAQUE INTERIEURE 425GM | SUPPORT INNER PLATE 425GM | LAMELLEBEHÄLTER 425GM |
| 69 | 70.56316.000 | 56316.2 ROOSTERSTEUN 425GM | 56316.2 SUPPORT DE GRILLE 425GM | 56316.2 GRATE SUPPORT 425GM | 56316.2 ROSTSTÜTZE 425GM |
| 70 | 03.69161.589 | TOPPLAAT 425CB/GM E10 | TOPPLAAT 425CB/GM E10 | TOPPLAAT 425CB/GM E10 | TOPPLAAT 425CB/GM E10 |
| 71 | 70.59209.000 | TREKSCHEPJE 600 | RACLOIR 600 | SCRAPER 600 | SCHÜREISEN 600 |
| 72 | 03.72301.000 | U-STUK (DEKSELTREKKER) | U-PIÈCE TIROIR DE COUVERCLE | U-PIECE (COVER) | U-STÜCK (DECKELZIEHER) |
| 73 | 70.76104.001 | 76104.0 VLAMPLAAT 500GM | 76104.0 DEFLECTEUR 500GM | 76104.0 BAFFLE PLATE 500GM | 76104.0 FLAMLEITPLATTE 500GM |
| 74 | 70.77055.020 | 77050.0 vuurkorf 425 gm | 77050.0 garde-buches 425gm | 77050.0 LOG RETAINER 425GM | 77050.0 stehorst 425gm |
| 75 | 70.35202.000 | LAMEL 450 35202.0 | LAMELLE 450 35202.0 | LAMELLA 450 35202.0 | LAMELLE 450 35202.0 |
| 76 | 03.79562.106 | ZIJWAND L 425CB/GM MET SCHUDSTANG | ZIJWAND L 425CB/GM MET SCHUDSTANG | ZIJWAND L 425CB/GM MET SCHUDSTANG | ZIJWAND L 425CB/GM MET SCHUDSTANG |
| 77 | 03.79563.189 | ZIJWAND R 425CB/GM E10 | ZIJWAND R 425CB/GM E10 | ZIJWAND R 425CB/GM E10 | ZIJWAND R 425CB/GM E10 |
| 78 | 70.79870.000 | SERVICE KIT 4.0M GLASVEZELKOORD 6MM - TU.SK6 | SERVICE KIT 4.0M JOINT FIBRE CERAMIQUE 6MM - SK6 | SERVICE KIT 4.0M GLASS FIBER ROPE 6MM -TU.SK6 | SERVICE KIT 4.0M GLASFASER SCHNUR 6MM - TU.SK6 |
| 79 | 70.20360.000 | 10 st D7984 M6X16 LAGE CIL.KOP BIN.ZESK | 10 p D7984 M6X16 BAS CIL.KOP BIN.ZESK | 10 pc SCREW M6X16 D7984 | 10 st D7984 M6X16 LAGE CIL.KOP BIN.ZESK |